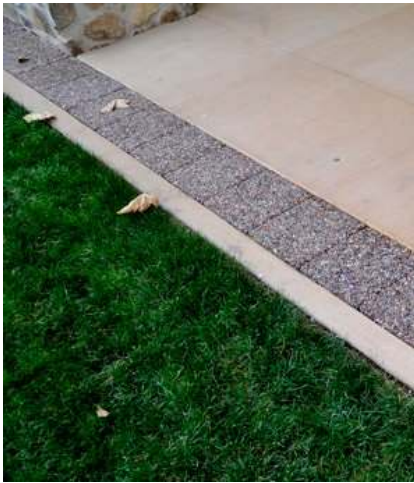




877-694-0141
pavers@xeripave.com



Two concerns surrounding any site design are what to do with accumulating stormwater and how to maintain the quality of that water. Bio-swales address water quality concerns but they do eat up real estate. Stormwater concerns are such an issue that LEED building guidelines award points for creative stormwater designs, and Xeripave pervious pavers answer both needs.

SS Credit 6.1 awards one point for stormwater quantity control. Xeripave pavers constructed on a recharge bed promote quantity control, using their highly pervious design. Site discharge and flow (over sidewalks and driveways, around parking areas, across rooftops, in courtyards) can be reduced by the conveyance of stormwater through the pavers to a properly constructed recharge bed.

SS Credit 6.2 awards one point for stormwater design addressing quality control. Xeripave pavers on a properly constructed recharge bed promote stormwater quality control through infiltration. Xeripave pavers have a 100% removal efficiency for gross pollutants. They also have a high efficiency for removal of micro-pollutants when they are constructed above a secondary filtration medium, and when compared to wetlands, wet ponds, swales, and dry ponds.

Depending on site conditions, Xeripave pavers may also be eligible for additional LEED credits.